

42/89

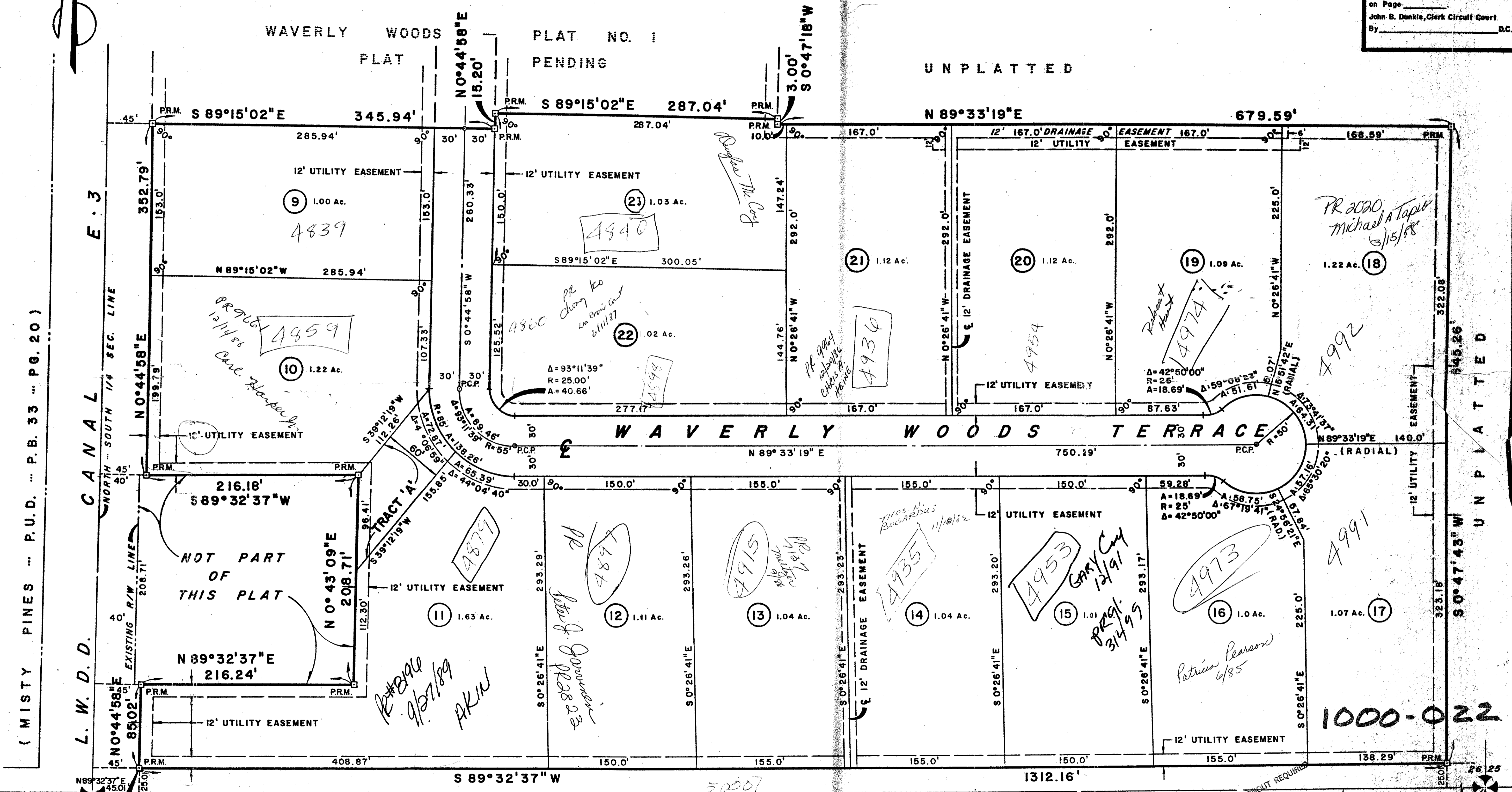
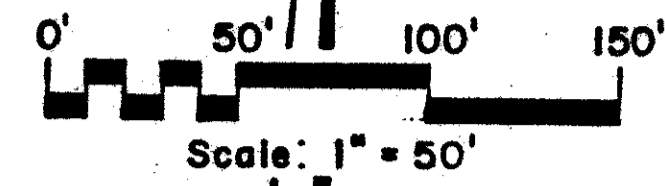
WAVERLY WOODS — PLAT NO. 2

A PLAT OF A PORTION OF SECTION 26, TOWNSHIP 44 SOUTH, RANGE 42 EAST, PALM BEACH COUNTY, FLORIDA

MICHAEL B. SCHORAH & ASSOCIATES, INC.
CONSULTING ENGINEERS & PLANNERS
SHEET TWO of TWO SHEETS

89

STATE OF FLORIDA
COUNTY OF PALM BEACH
This Plat was filed for record at _____ M. this _____ day of _____ 19____
and duly recorded in Plat Book No. _____
on Page _____
By John B. Dunkle, Clerk Circuit Court
D.C.



(MISTY PINES ... P.U.D. ... P.B. 33 ... P.G. 20)

L. W. D. D. CANAL SOUTH 1/4 SEC. LINE E. 3

SOUTH 1/4 CORNER SEC. 26

P.O.B.

L. W. D. D.

SOUTH LINE OF SECTION 26, TWP. 44 S., RGE. 42 E. CANAL L. 14

SECTION CORNER 35 36

WAVERLY Woods #2
42/89

1000-022

MICHAEL B. SCHORAH & ASSOCIATES, INC.
ENGINEERS PLANNERS DEVELOPMENT CONSULTANTS
1850 FOREST HILL BLVD SUITE 205 WEST PALM BEACH FLORIDA 33406
PHONE (305) 968-0880